

PRODUCTS & APPLICATION

F serious

[F series \(/en.php/product/detail?id=51\)](/en.php/product/detail?id=51)

[K series \(/en.php/product/detail?id=52\)](/en.php/product/detail?id=52)

[N series \(/en.php/product/detail?id=53\)](/en.php/product/detail?id=53)

F serious

请您留言

SWT/F series

For SWT/F series locking nut, its brass locking pin forms a angle of 30 degree with the thread. It does not bear the axial load forced on the thread. Once the nut is locked, the thread surface will not release axial load and the nut will not be deformed. Three lock nuts with equal spaces can precisely position the nut, keep it perpendicular to the shaft. F-type nuts can ensure their precision even after multiple assembly and dis-assembly.

Material: 42CrMo,45#, 40Cr

Hardness: HRC28°—32°

Thread Precision: ISO4H

Run Out: 0.005mm

发送

Thread	D	h	d	n-g	t	n-m	MAX.Nm
SWT/F M12x1.5P	30	14	26	3-4	2	3-M5	4.5
SWT/F M14x1.5P	30	14	26	3-4	2	3-M5	4.5
SWT/F M15x1.0P	30	14	26	3-4	2	3-M5	4.5
SWT/F M16x1.5P	30	14	26	3-4	2	3-M5	4.5
SWT/F M17x1.0P	32	16	28	3-4	2	3-M5	4.5
SWT/F M18x1.5P	32	16	28	3-4	2	3-M5	4.5
SWT/F M20x1.0P	38	16	34	3-4	2	3-M5	4.5
SWT/F M20x1.5P	38	16	34	3-4	2	3-M6	8
SWT/F M22x1.5P	38	16	34	3-4	2	3-M6	8
SWT/F M24x1.5P	38	18	34	3-5	2	3-M6	8
SWT/F M25x1.5P	38	18	34	3-5	2	3-M6	8
SWT/F M27x1.5P	40	18	36	3-5	2	3-M6	8
SWT/F M30x1.5P	45	18	41	3-5	2	3-M6	8
SWT/F M33x1.5P	50	18	46	3-5	2	3-M6	8
SWT/F M35x1.5P	52	18	48	3-5	2	3-M8	18
SWT/F M36x1.5P	52	18	48	3-5	2	3-M8	18
SWT/F M39x1.5P	58	20	53	3-6	2.5	3-M8	18
SWT/F M40x1.5P	58	20	53	3-6	2.5	3-M8	18
SWT/F M42x1.5P	62	20	57	3-6	2.5	3-M8	18
SWT/F M45x1.5P	65	20	60	3-6	2.5	3-M8	18
SWT/F M48x1.5P	70	20	65	3-6	2.5	3-M8	18
SWT/F M50x1.5P	70	20	65	3-6	2.5	3-M8	18
SWT/F M52x1.5P	73	22	67	3-7	3	3-M8	18
SWT/F M55x1.5P	76	22	69	3-7	3	3-M8	18
SWT/F M55x2.0P	76	22	69	3-7	3	3-M8	18
SWT/F M58x1.5P	79	22	69	3-7	3	3-M8	18
SWT/F M58x2.0P	79	22	69	3-7	3	3-M8	18
SWT/F M60x2.0P	80	22	74	3-7	3	3-M8	18
SWT/F M64x1.5P	85	22	79	3-7	3	3-M8	18
SWT/F M64x2.0P	85	22	79	3-7	3	3-M8	18
SWT/F M65x2.0P	85	22	79	3-7	3	3-M8	18
SWT/F M68x2.0P	92	24	85	3-8	3.5	3-M8	18
SWT/F M71x2.0P	92	24	85	3-8	3.5	3-M8	18
SWT/F M72x2.0P	94	24	87	3-8	3.5	3-M8	18
SWT/F M75x2.0P	98	24	91	3-8	3.5	3-M8	18
SWT/F M76x2.0P	98	24	91	3-8	3.5	3-M8	18
SWT/F M80x2.0P	105	24	98	3-8	3.5	3-M8	18

请在此输入留言内容，我们会尽快与您联系。（必填）

姓名

电话（必填）

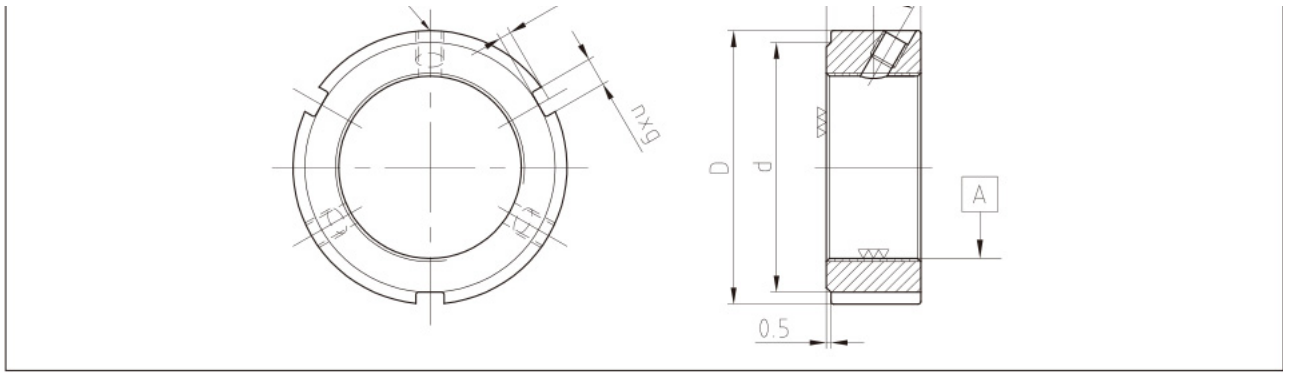
邮箱

地址

请您留言

发送





Thread	D	h	d	n-g	t	n-m	MAX.Nm
SWT/F M85x2.0P	110	24	103	3-8	3.5	3-M8	18
SWT/F M90x2.0P	120	26	112	6-10	4	3-M8	18
SWT/F M95x2.0P	125	26	117	6-10	4	3-M8	18
SWT/F M100x2.0P	130	26	122	6-10	4	3-M8	18

请您留言

Spindle Lock nut Bearing block Wedge block Rotary table Hydraulic lock nut Accessory

A Xuzhuang Park Road, Xingren Town, Tongzhou District, Nantong, Jiangsu, China
 T +86-513-86222888 F +86-513-85650761

发送

About Us

Product

Company Strength

Contact Us

Company Profile

(/en.php/about/index)

Company History

(/en.php/about/history)

Honors and Rewards

(/en.php/about/honor)

Our Customer

(/en.php/about/net)

Product Line

(/en.php/product/cate?

id=28)

Application Fields

(/en.php/product/app-list)

Solution

(/en.php/tech/solution?

type=1)

Technical Innovation

(/en.php/tech/innovation)

FAQ

(/en.php/tech/qanda)

Download

Careers

(/en.php/contact/job)

Location

(/en.php/contact/index)

Copyright(C)2009-2017 Jiangsu Swift Machinery Technology Co., Ltd 苏ICP备17027845号-1 (<http://www.miitbeian.gov.cn/publish/query/indexFirst.action>)

DESIGN BY **HANSNBRAND** (<http://hansnbrand.com>)

请您留言

发送